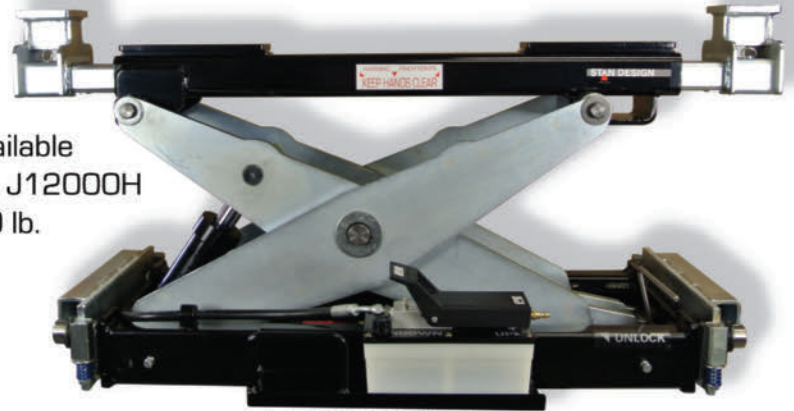


POWER JACKS

standard features include:
 heavy-duty hydraulics
 dual multi-level safety
 dual hand controls
 stackable adapters
 extended lift height
 smooth operation
 easy rolling action
 convenient pull handle
 self retracting coil hose
 high gloss paint
 zinc plated components
 and accessories

A FULL OFFERING OF
 HEAVY-DUTY JACKS
 12K/15K/18K/25K/35K/50K
 CAPACITY ROLLING JACKS



also available
 MODEL J12000H
 12,000 lb.

J15000H shown 15,000 lb.
 Designed to fit all lifts and pits
 fully adjustable



J25000H shown 25,000 lb.
 Designed to fit all lifts and pits
 fully adjustable



also available
 MODEL J50000H
 50,000 lb.

J35000H shown 35,000 lb.
 with optional all-weather shield
 Designed to fit all lifts and pits
 fully adjustable



POWER JACK
 lifting adapters
 are stackable
 and can be used on the top beam
 for narrow pick up points

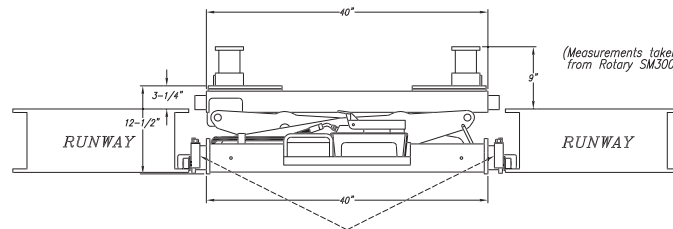


UNIVERSAL ROLLING BRIDGE JACKS

rolling jack specifications

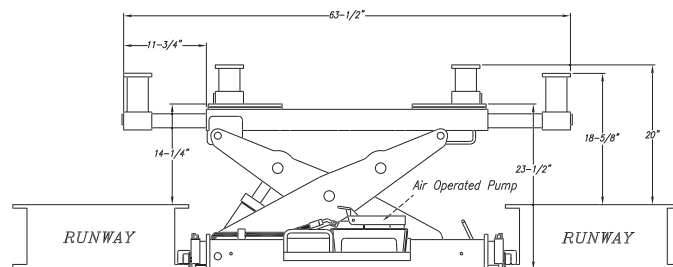
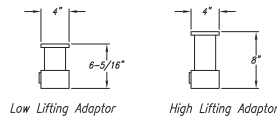
STAN DESIGN

www.standesigninc.com

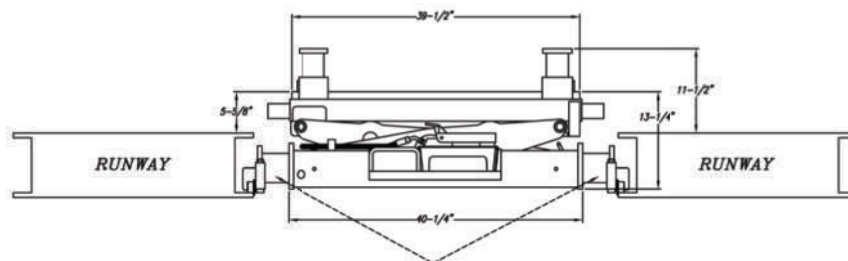


(Measurements taken from Rotary SM300)

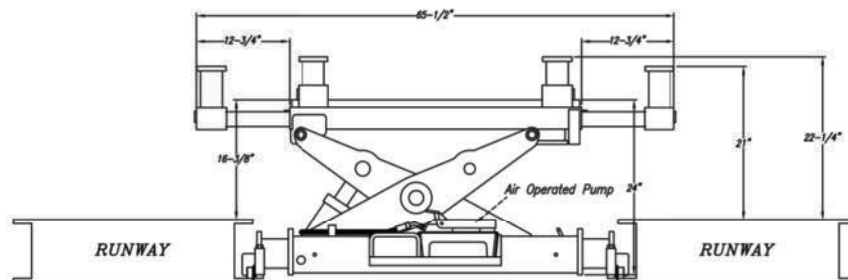
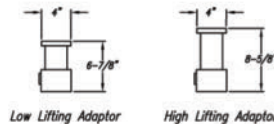
Wheel Assemblies
(Adjustable: Fits between 42.25"-53.50" between opening runways)



Jack Fully Raised with Arms Extended



Wheel Assemblies
(Adjustable: Fits between 42.25"-53.50" between opening runways)



Jack Fully Raised with Arms extended

(866) 782-6529