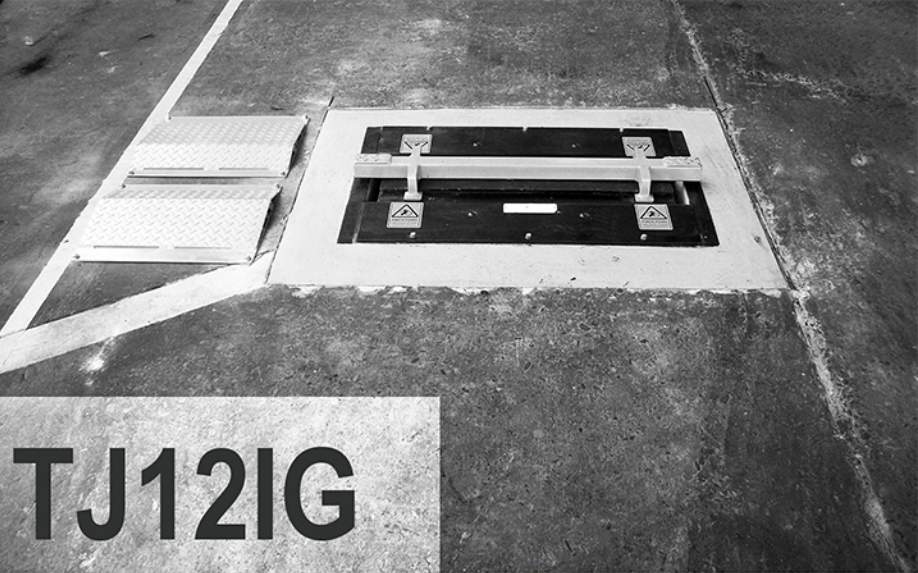




INGROUND JACKS
SCORPION



TJ12IG

TJ12IG

Inground Lift
perfect for
tire bay and
any hard to
lift vehicles



Zero ground
clearance
pick up any
vehicle

APPLICATIONS:

Tire service bays
Alignment bays
Low clearance vehicles
Vehicles with aerodynamics

FEATURES:

25,000 Lb. Cap
Air/Hydraulic Scissor Design
Multi-Level Lock
Low, Med and High Saddles
Easy Install

STAN DESIGN

866 782 6529 · STANJACKS.COM

INGROUND JACKS

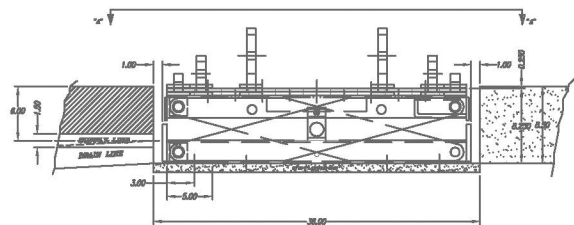
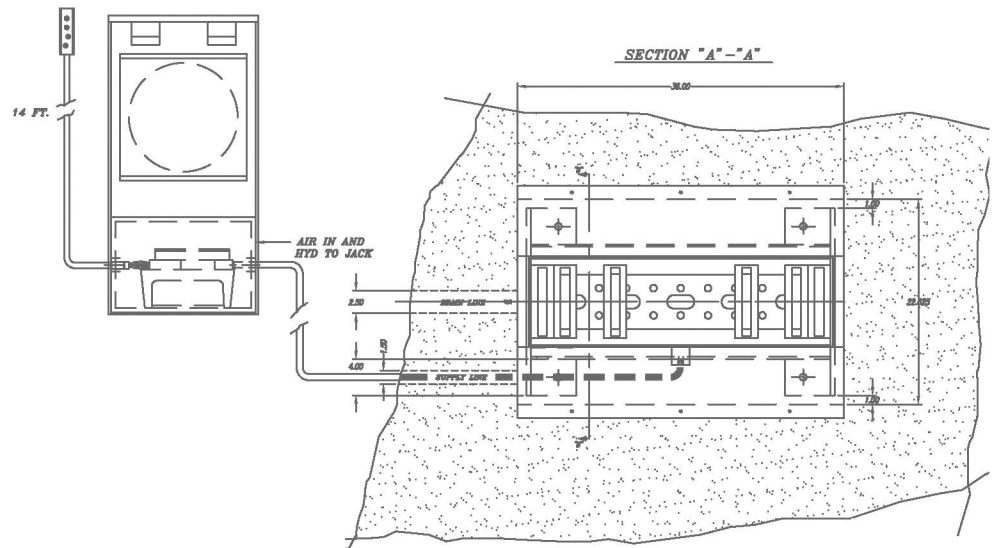


SCORPION TJ12IG

SPECIFICATIONS



Control panel



Operating pressure
90-140 PSI